



*People. Power. Service.™*

**pak design**  
architectural designers

### CREDITS

Architectural Designer:	Matt Janes
Consulting Engineer:	Vert-X Consulting Engineers
Contractor:	Humphries Construction
Interior Design:	Matt Janes, Cervus Equipment

### PROJECT INFORMATION

Project Cost :	\$2,250,000.00
Completed :	2016
Building Footprint:	1417m <sup>2</sup>
Site Area:	8003m <sup>2</sup>

### PROJECT DESCRIPTION

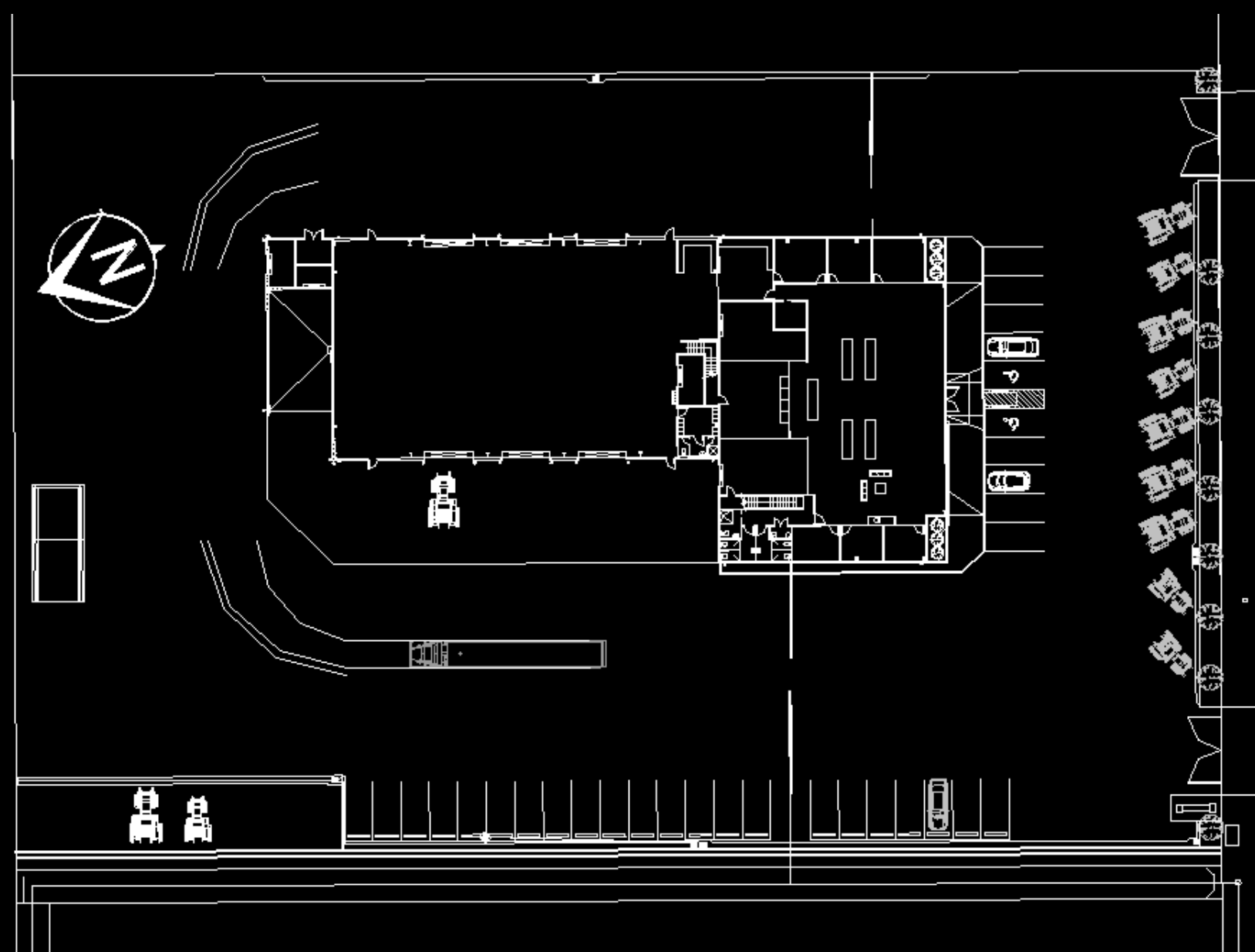
Built in Feilding, the Agri-hub of the Manawatu, the new Cervus Equipment Building stands tall and proud on its Darragh Road site.

Drawing inspiration from Cervus Equipment's slogan "People, Power, Service", the statement was a driving factor in the design of this state of the art showroom, workshop and office space. This development is intended to stand as a "template" design for how Cervus Equipment will continue to develop their National image.

The Darragh Road site has been adeptly designed with consideration given to staff, customers and machinery alike. Offices and amenities frame the sides of the showroom, with the parts pick-up bay and workshop area being deliberately positioned to minimise disruption, allowing maximise work flow. The design allows fluidity between all departments, improving work efficiency.

Future proofing and growth within the space was also taken into account with multi-use spaces and structural design to allow for any expansion in the future, giving Cervus Equipment a home for many years to come.

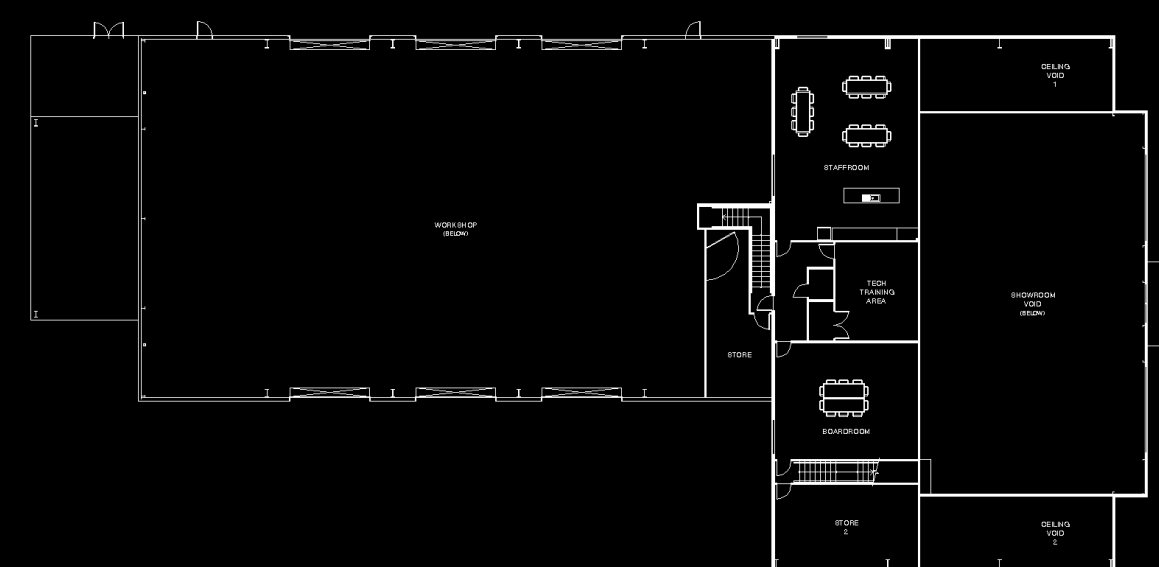
### SITE PLAN



### GROUND FLOOR



### MEZZANINE







*People. Power. Service.™*

pak design  
architectural designers

DESIGN FEATURES &  
CREATIVE SOLUTIONS

A key focus area for the Cervus team was how the staff, customers and machinery interact throughout the building. Offices and amenities frame the sides of the showroom with the parts pick-up bay and workshop area being deliberately positioned to minimise disruption, allowing efficient work flow.

The design allows interconnection between all departments, permitting the continuous movement of both foot and machinery traffic throughout any business day.

Generous display areas dominate the showroom and front yard to showcase the client's agricultural machinery products both inside and out.

The vertically bi-folding glass doors guard each side of the main entrance adding versatility to display the large agricultural machinery and also provides an abundance of natural light when closed.

At the rear of the building you will find the spacious workshop spanning over 700m<sup>2</sup>. Three rollers doors adorn each side which allow for flexibility to open and close depending on the wind direction. This also allows the Cervus equipment team of technicians to service and manoeuvre the various size of machinery with ease.

The design was complemented by the company colours and signage across the top of the painted titan panel facade making this building stand to attention and stand out from the surrounding buildings.



ELEVATIONS

