

Credits

Architectural Designer: Matthew Janes
Contractor: Humphries Construction
Consulting Engineering: Vert-X Consulting Engineers
Interior Design: Cath Terry, Paul Humphries & Matthew Janes

Project Description

Originally opened in 1965, the building was designed for the BNZ bank. During the demolition phase many treasured and historical items were discovered including a building report, which revealed that in the basement was a 'strong-room' used for storing records - this provided the inspiration for the new name of this iconic building, **The Strong Room**.

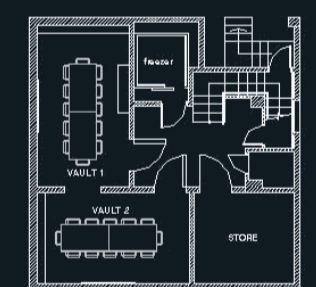
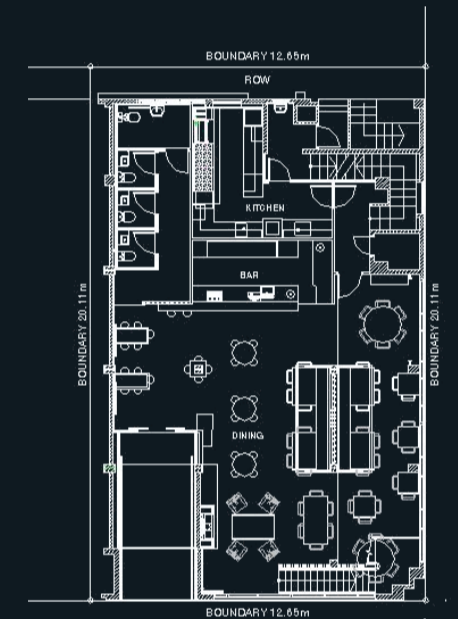
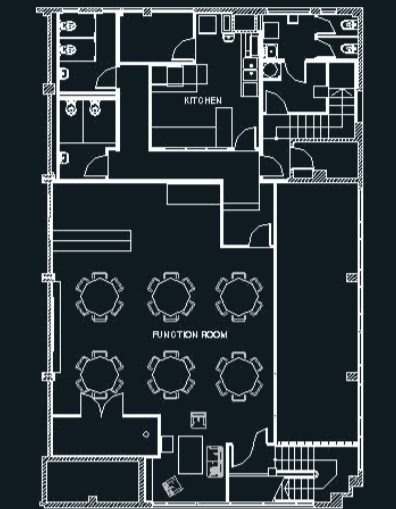
The structure had previously been described in a district plan review as a landmark due to its architectural form and scale. The brief given to PAK Design was to create a new bar and restaurant without losing the character of the original building.

Changing the use of the building had its challenges. Earthquake strengthening, accessibility, fire safety, health and food hygiene were all issues that had to be resolved as a part of the works - not to mention the discovery of a large diesel storage tank that needed to be removed.

The contemporary update commenced in February 2013 with the business opening in September of the same year.

The attention to detail is evident in many features like the retro-styled block cut-out bulkhead suspended from the ceiling on the front bar which we custom designed to fit the era of 1960's.

The result being a brilliant design and build project that has seen new life breathed into this iconic Feilding Building





Project information

Project cost	\$385,000.00
Project Areas	
BUILDING FOOTPRINT:	516 m ²
SITE AREA:	253 m ²

Design Features & Creative Solutions

The Exterior was painted black with self-cleaning nano technology paint. The walls were Earthquake strengthened and beams have purposely been made into an architectural feature, giving the building a semi-industrial look. Sealed concrete polished floors continue the rustic theme while highlighting the natural aspects of the décor. The use of recycled rimu, old dark oak bar and joinery work helped to keep some of the old stories intact and budgets down. The use of local native timbers and old barn doors and furniture add to the special features. The sitting area in the main bar boasts a solid concrete hearth and reclaimed timber mantelpiece along with a boxed-in flame gas fire for warmth giving the area a feeling of comfort and adding to the ambience.

The building allowed the design to offer hospitality over three levels. The mezzanine floor was altered to home functions of all types. The basement offers diners an experience with a difference – enjoying a meal in the original vaults with the solid vault doors intact. Having this feature had its design issues with the need to provide ventilation underground and create an external fire escape, which took a bit of diggin. To our disbelief we discovered a 4000 litre diesel tank that was half full! This was removed and concrete stairs added.

A truly magnificent transformation of a site steeped in history. The Clock Tower continues to stand tall making it a lasting landmark in the small rural township of Feilding.