

Credits

Architectural Designer: Matthew Janes
 Contractor: Humphries Construction
 Consulting Engineering: Vert-X Consulting Engineers
 Interior Design: Matthew Janes & Cath Terry
 Landscape Design: Total Landscape Solutions

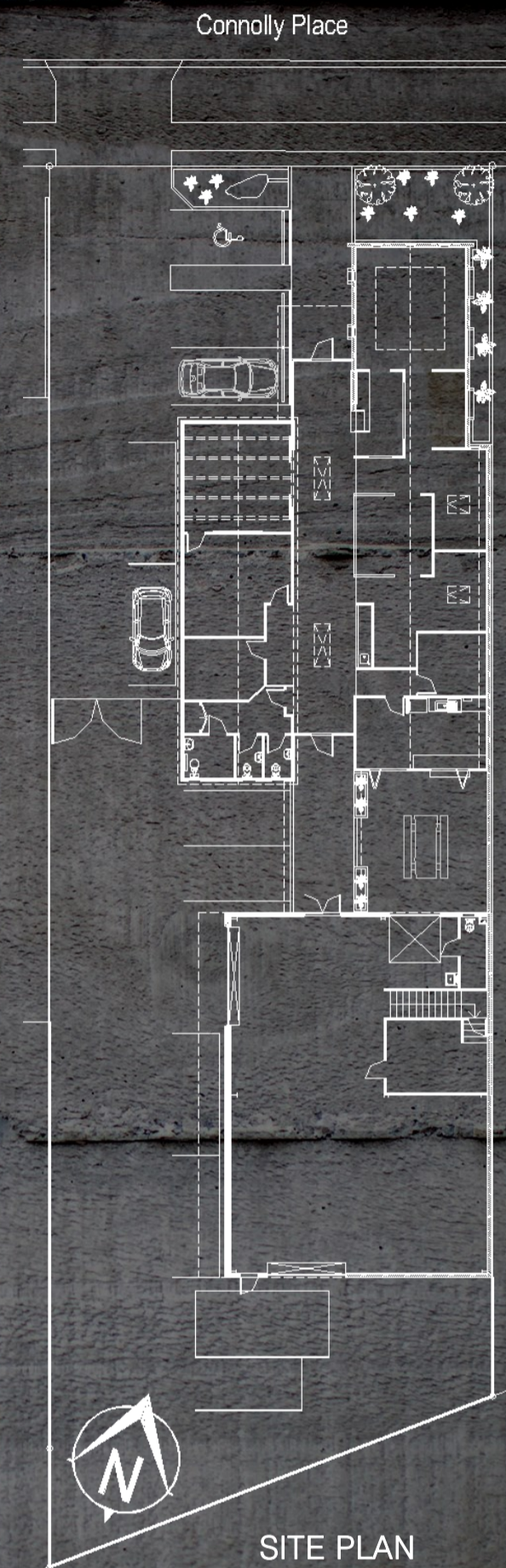
Project Description

Humphries Construction had seen a vast amount of growth in their old premises, and needed to accommodate that whilst also allowing for future growth, in the design of their new premises. Part of the brief was to showcase their skill and diversity in the building industry, especially the uses of carpentry and concrete. This was a strong directive, carried through the design process.

The office brief was "A large open plan, multi-use office space, giving careful consideration to natural light and ventilation". Also "a space that showcases our quality craftsmanship and the diversity of what we do".

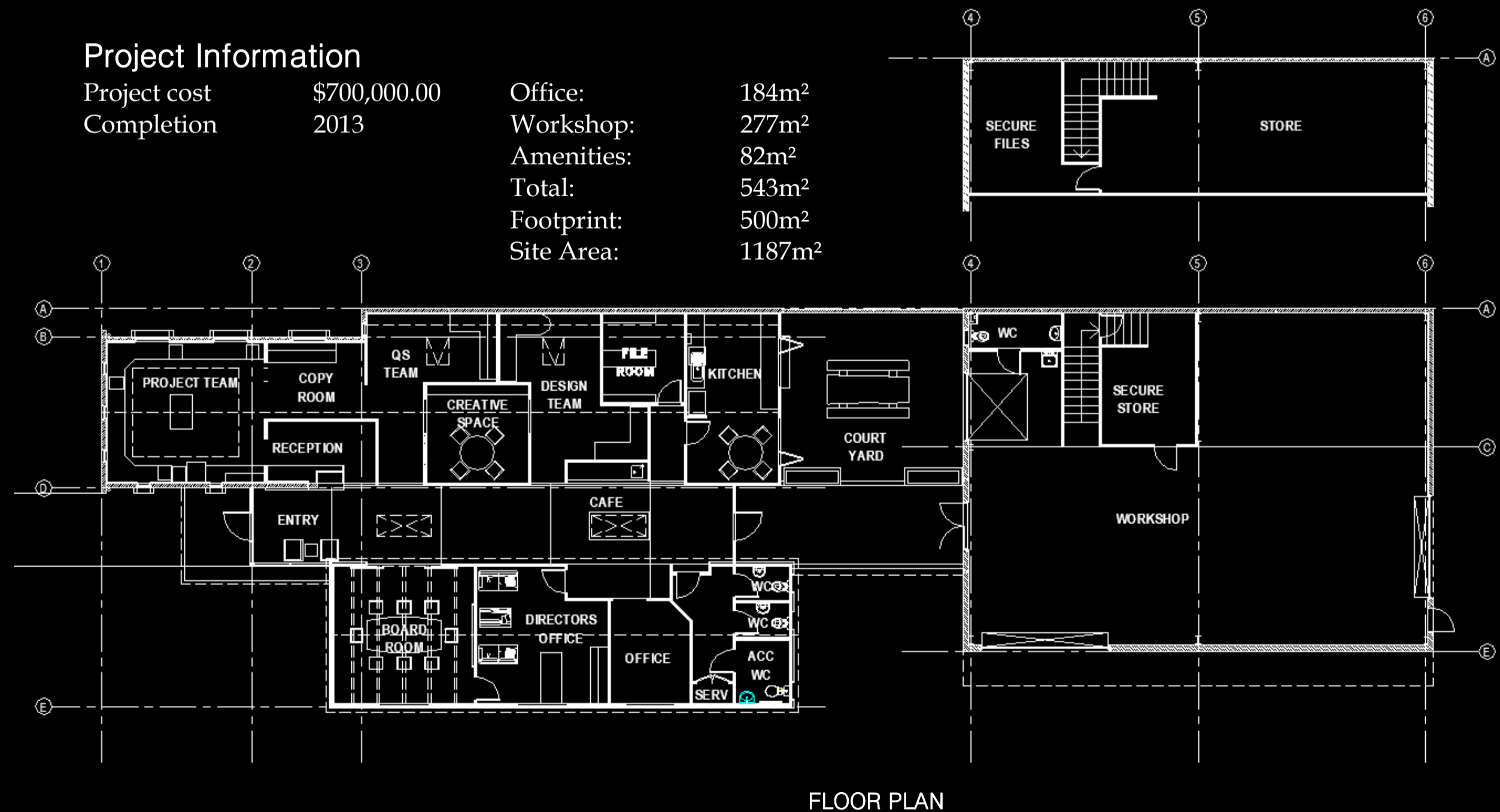
Open plan areas can have their drawbacks when it comes to noise and privacy. Instead of a straight open space, there was an idea to create separate "nooks". Careful consideration on how the office would evolve was needed when designing these spaces. The areas needed to work cohesively for collaborative get-togethers, but also separately for confidential discussions and private meetings, furthermore informal spaces to break out were also a requirement.

In the previous premises, the yard had been attached to the office building. There was a requirement to separate these spaces given the element of noise, movement and dust created by the workshop. A link with the walk way was formed from office to yard, with staff court yard and barbeque area between.



Project Information

Project cost	\$700,000.00	Office:	184m ²
Completion	2013	Workshop:	277m ²
		Amenities:	82m ²
		Total:	543m ²
		Footprint:	500m ²
		Site Area:	1187m ²





Design Features & Creative Solutions

The exterior - one wing using precast concrete, the other a cedar rain screen, enforcing the design brief. The use of planting softens the harshness of the concrete.

Concrete and timber theme is transferred into the interior. The exterior precast concrete continues inside to form the reception area, with timber creating the reception top.

The timber theme flows along the passage. A recycled rimu slat wall encompasses a creative space between the Quantity Surveyors & the Design Team nooks. Both nooks have opening roof windows for natural light and ventilation.

The administration hub is situated at the front of the building. With multiple staff using this space, Autex wall linings and acoustic carpet tiles have been used to control noise. The windows in this area are purposely at eye level ensuring natural light and ventilation is provided.

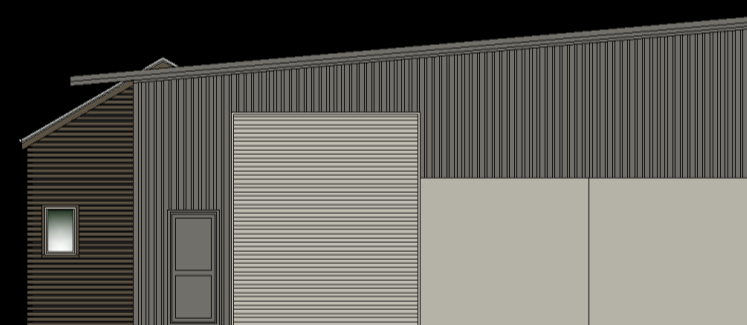
In the timber wing the carpentry is showcased once again. The boardroom has a exposed rafter pitched ceiling along with bespoke light fitting using recycled rimu.

As your eye travels further down the passage there is a weatherboard feature wall, similar to that of a 1950's weatherboard home with matching recycled window, picket fence and window planter box. This houses the Director's office.

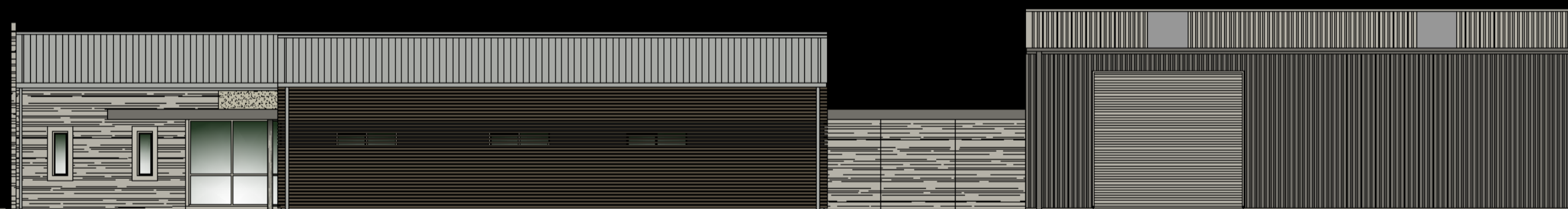
A customer coffee area and staff amenities, are housed at the end of the passage. The staffroom breaks out to a sheltered court yard nestled between the office and work shop . A covered walk way links the office to the workshop, clearly visible from the entrance.



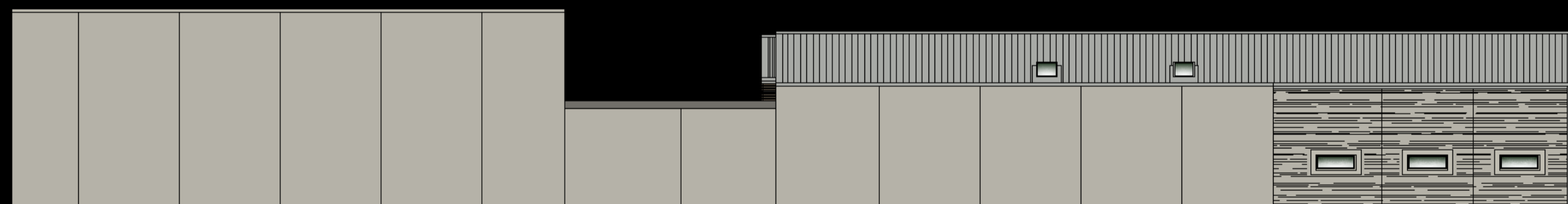
NORTH ELEVATION



SOUTH ELEVATION



WEST ELEVATION



EAST ELEVATION

