

Neale Family Farmhouse

Credits

Architectural Designer: Matthew Janes
Contractor: Humphries Construction
Consulting Engineering: Vert-X Consulting Engineers

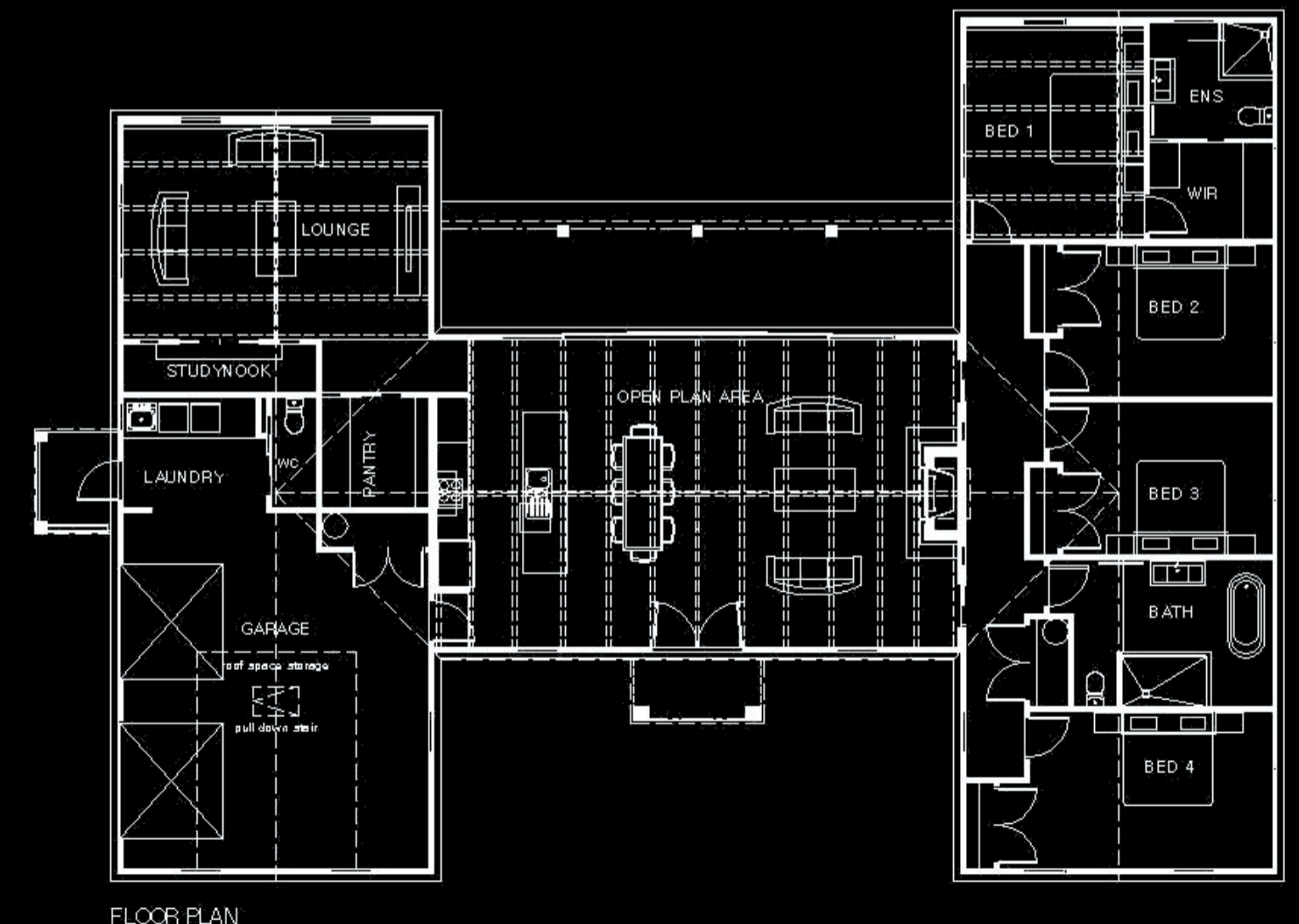
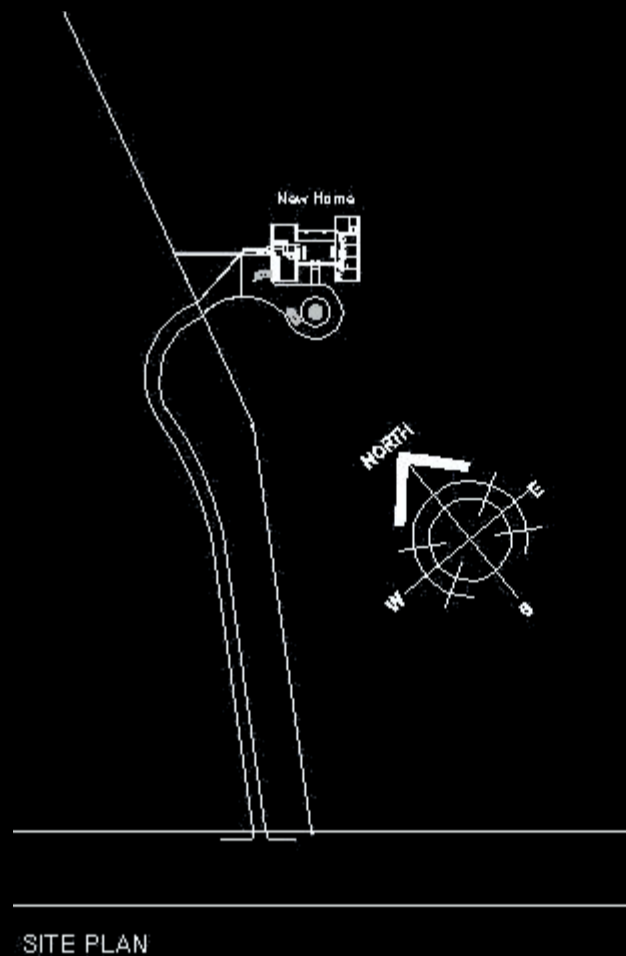
Project Description

The Neale Family's stylish but unassuming H-shaped home is set in rural Manawatu overlooking the land they call home. When they came to PAK Design the brief demanded a spacious family home without the standard, run of the mill feel – they wanted something a little more unique.

The concept was developed taking reference from English style stone farmhouses. Design principles associated with these are simplistic, symmetrical gable end structures with proportionally narrow windows. Design consideration was needed in the orientation of the home to protect from prevailing westerly winds – this is where the H-shaped design flourished. The design allows for a sheltered outdoor area to enable the family to enjoy the views without disturbance from the elements.

Large Hinuera stone cladding helps to retain the traditional character, and to ground the structure to the landscape, complementing the rural surrounds that this home overlooks.

The style of the exterior is also reflected in the warm and welcoming interior. Open plan living with a difference offering distinct assigned areas that are keeping with the exterior symmetry, and provide clarity for family and guests, yet can be easily blended as needed. The large open living area is drenched with natural light from the deliberate placement of windows that surround the home. The windows then flow on to stacking doors opening onto a generous and sheltered outdoor courtyard. The natural, earthy palette continues to adorn the interior walls giving a rustic but somewhat noble appeal.





Design Features & Creative Solutions

The Hinuera slab cladding compliments the copper spouting and stained timber surrounding the covered entrance. The neutral colour palette of the aluminium windows enhances the stone, and the use of colonial bars ties back to the English farmhouse style. Zincalume roofing was selected to partner the existing buildings on the site tying them together. The final placement position was chosen to maximise the H-shaped structure to protect the central courtyard from prevailing winds. Pastures of green surrounds the deliberately smooth concrete driveway that leads up to the main entrance of the home, giving a feeling of grandeur.

Opening the barn style entrance door you are instantly greeted by high pitched tongue and groove ceilings, the continuation of the Hinuera stone surrounding the fireplace and kitchen island complements the exterior. The kitchen incorporates traditional design retaining the style of the home. Laminated NZ Blackwood timber was used to create a large kitchen workspace. The use of structural steel beam along the ridgeline creates a large, open plan living space for the family to enjoy. Ground polished concrete flooring cut into large tiles helps retain heat from the day's sun slowly releasing it through the evening. The styling was continued throughout the house, with bathrooms lined in T&G and the continuation of the concrete tile through the passageway and bathrooms. Pitched ceilings were also used in the separate lounge and master bedroom. The style throughout the home takes you back in time but cleverly adds interest to this modern home.

The space works really well and meets the needs of our family, we love the way each space interacts. Every angle of our home has a view.

Mr & Mrs Neale

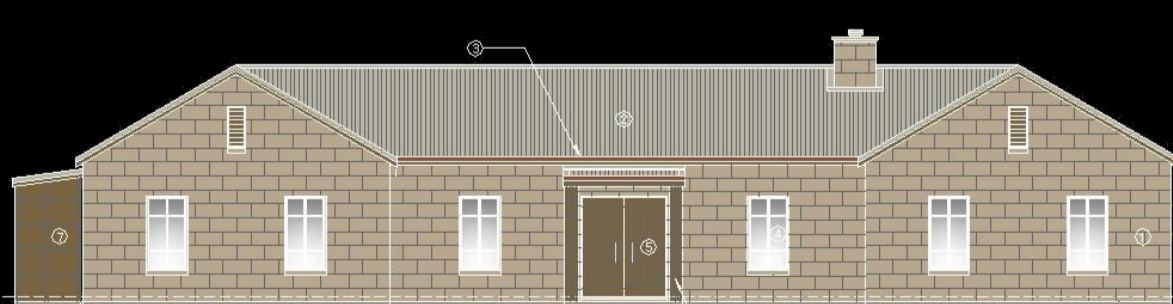


SYMMETRY

SIMPLICITY

COMPLEMENTARY

DEFINED



SOUTH WEST ELEVATION



NORTH WEST ELEVATION



NORTH EAST ELEVATION



SOUTH EAST ELEVATION